

2022 - 23

# Annual Report



**Palliative Care**  
NEW SOUTH WALES





# Contents

**02.** From the President and Acting Chief Executive Officer

**05.** Areas of Focus

**07.** Strategic Plan

**09.** Volunteer Support Services Programme

**11.** Palliative Care Service Guide

**13.** Highlights

**18.** Engagement

**19.** Our People

**20.** Financial Report

# From the President & Acting Chief Executive Officer

To begin the 2022-23 Palliative Care NSW (PCNSW) Annual Report, we would like to thank our dedicated health workers and services in NSW, who continue to provide quality Palliative Care despite the many challenges they have endured over the past few years. We are incredibly grateful for your strength and perseverance, and we continue to strive to support you as you provide exceptional care.

Her Excellency the Honourable Margaret Beazley AC KC, Governor of New South Wales, has agreed to become our Patron. She commenced her role on 30 November 2022. We are delighted to welcome Her Excellency and look forward to welcoming her to coming events.

The long-standing Chief Executive Officer of PCNSW, Linda Hansen, departed her role at the end of this financial year. Linda worked with PCNSW for 19 years, and during this time she played a pivotal role in establishing PCNSW as the peak body for Palliative Care in NSW. We would like to thank Linda for the tremendous work she has done for the organisation, and we wish her all the best in her future endeavours.

In November 2022, the Executive Members of the Management Committee were elected for 2023-25. I was delighted to commence my role as President at this time having served as a member of the Management Committee since 2018, and Therese Smeal transitioned to the position of Vice President. We would like to thank Therese for her dedication to PCNSW during her time as President, and as Vice President during this financial year. Special thanks also to Nicole Sutton as our Treasurer, and Joan Ryan OAM as our Secretary.

The General Members of the Management Committee will remain in place until the end of 2024. We would like to thank the Executive and Management Committee for all the work they do to support PCNSW, and we look forward to working with our Committee members over the coming years.



*Former Chief Executive Officer Linda Hansen with Management Committee Members Nicole Sutton, Felicity Burns and Therese Smeal at the 2022 PCNSW Biennial State Conference.*

There have been some changes to the PCNSW staff during this financial year. Emma Scott-Stevenson began the role of Policy Officer after completing her internship with PCNSW through Macquarie University. We also welcomed Dr Peta McVey into the role of Palliative Care Service Guide, to navigate carers, family members and health professionals in the right direction to access appropriate services to meet their needs. Peta is a registered nurse with more than 30 years clinical experience in a variety of settings, with extensive Palliative Care expertise. We are happy to have both Emma and Peta join the PCNSW team, and we look forward to working with them.

Megan Asbury stepped into the role of Acting Chief Executive Officer following Linda’s departure and has been providing the team with exceptional support. There has been a significant increase in engagement through our membership and social media output, as a result of the hard work of our Communications Officer Maria Lopez. Kate Bowman has also continued in her role as Manager of the Volunteer Support Services Programme. The connections Kate has established with the Network of Palliative Care Volunteer Managers is admirable, and we are proud to support the much-needed volunteer services in NSW.

We were thrilled to be able to hold our Biennial State Conference at The Crowne Plaza in Terrigal towards the end of 2022.

It was a wonderful opportunity to connect with our members, and we would like to thank everyone for their attendance. You can read more about the conference in the Highlights section.

Following the success of the conference, we resumed our regular activities and refocused on supporting our members and developing relevant resources. We established a private Facebook group for our members and health professionals in NSW to engage with each other and find connections with their peers.

We also prepared for National Palliative Care Week (NPCW), which took place in May 2023. PCNSW street banners were installed in the Sydney CBD throughout the week, and we held a screening of Live the Life You Please as the official NPCW launch. Our Education Day was another great success, and it was terrific to see all of our members who were able to attend. You can read more about the events of NPCW in the Highlights section.



*Former Chief Executive Officer Linda Hansen with Acting CEO Megan Asbury and PCNSW staff members Maria Lopez, Kate Bowman and Emma Scott-Stevenson at the 2022 PCNSW Biennial State Conference.*

We also completed the study on Homelessness and Palliative Care in Metropolitan Sydney as part of Palliative Care Australia's National Project on Homelessness and Palliative Care. The project garnered significant interest from our members and the broader health and social community, and so we undertook a subsequent study on homelessness and Palliative Care in Regional, Rural and Remote areas of NSW. The study is expected to be completed in late 2023.

We continue to work closely with the NSW Ministry of Health, and acknowledge their ongoing support of our organisation, as well as Palliative Care staff, services and programs across the state. Our shared vision of equitable access to Palliative Care for all residents of NSW continues to provide ongoing opportunities for collaboration, now and into the future.

A much-discussed topic throughout this financial year is the Voluntary Assisted Dying legislation that will come into effect in NSW toward the end of 2023. PCNSW is committed to supporting our members and the availability of quality Palliative Care services for individuals in NSW. We will continue to provide our members and the wider community with up-to-date information as it becomes available.

Finally, we would like to thank our members for their ongoing support and dedication to our organisation. We are proud to serve our members and the

wider Palliative Care community in NSW, and it is with your help that we are able to do so. The feedback we receive from our members is incredibly valuable, and helps us better support you in the ways you need.



**Megan Asbury**

Acting Chief Executive Officer,  
Palliative Care NSW



**Felicity Burns**

President, Palliative Care NSW



*Collaborative Art Therapy session at PCNSW's Professional Education Day 2023.*

# Areas of Focus

## Awareness and education

One of our main areas of focus as an organisation is raising awareness of quality Palliative Care within the community and providing up-to-date educational materials. We have continued to expand our resources on our website, which cover topics such as Palliative Care, end-of-life care and planning, aged care, life-limiting illnesses and other related diseases. We updated our Palliative Caring booklet, which provides carers with helpful information and is available for download on our website or hardcopy order. Our member eNews and Pallium journals also provide our members with current information and relevant news. We use our social media platforms to promote our resources and events, and connect with a greater audience online to continue raising awareness of Palliative Care. During National Palliative Care Week (NPCW), we installed PCNSW banners that promoted the 'People at the Heart of Quality Palliative Care' in the Sydney CBD. The banners successfully raised awareness and education of NPCW and Palliative Care. The introduction of the Community Conversations Project also serves to educate members of the community about the availability of Palliative Care.

## COVID-19 support

While we hope the worst of COVID-19 is beginning to ease, we understand that our members and the wider healthcare community continue to feel the lasting impacts of the pandemic. We are also aware of the unique ways that COVID-19 impacted the provision of Palliative Care. We continue striving to support our members in the ways they need, and we thank everyone who has contacted us for advice during these trying times. We would again like to thank our members, Palliative Care and broader healthcare providers for their unending strength and perseverance, and their dedication to providing patients with quality Palliative Care.



## Communications and engagement

We continued to improve our communications and engagement with our members and the broader community during this financial year. Our website hosts an array of relevant resources available for download, and we regularly promote up-to-date news and events to encourage engagement with our content.

We are constantly exploring new ways to connect and engage with both our online and in-person audiences. We publish our member eNews fortnightly and our Pallium journals are available to view online. Our Communications Officer Maria Lopez is extremely dedicated to creating content for our platforms that is creative and engaging. Due to her immense effort, our social media platforms have received increasing attention and interactions from our online audience.

Our Palliative Care Service Guide has also greatly increased our ability to engage with our members and the community over the phone. Dr Peta McVey provides our callers with the resources to access high quality Palliative Care, and her role has successfully improved our communications with our members.



Our Biennial State Conference towards the end of 2022 provided us with an incredible opportunity to reconnect with our members and promote our organisation. We held an effective social media campaign promoting our conference in the months and weeks leading up to it, and we had a fantastic turn out at the event. National Palliative Care Week (NPCW) 2023 provided us with another way to connect and engage with our members in person.

## Political representation

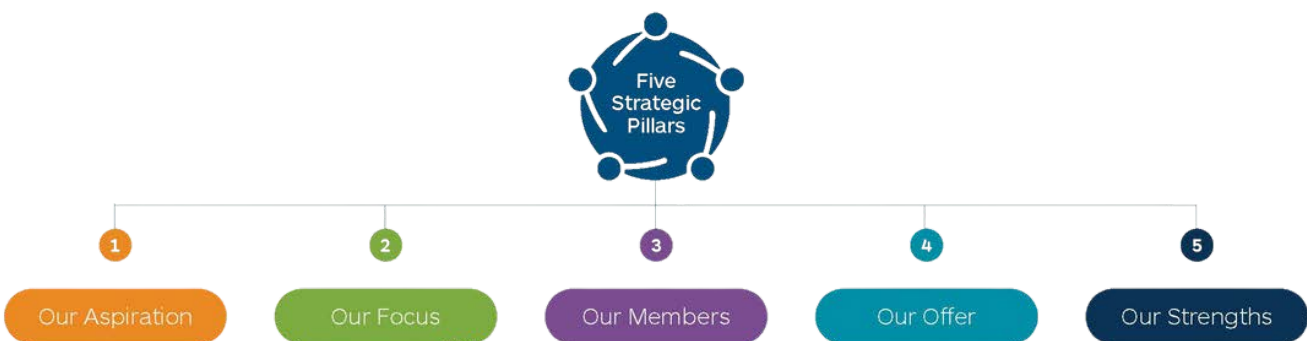
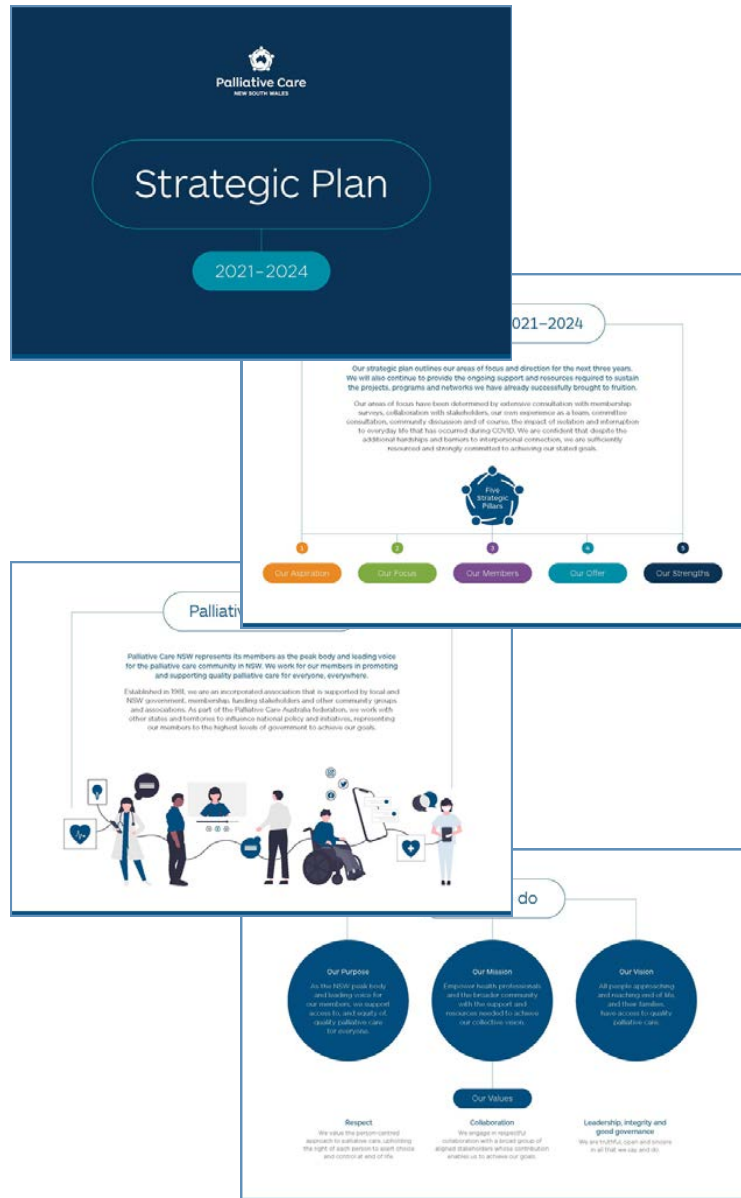
PCNSW regularly represents the Palliative Care sector through engagement with members of the NSW parliament and the NSW Ministry of Health. In 2022, the NSW Government announced a funding boost of \$743 million to Palliative Care in NSW over the next five years. This funding will be in addition to the \$300 million the NSW Government currently invests in Palliative Care each year, and will contribute to the employment of additional health staff and the improvement of NSW Health facilities. PCNSW look forward to continuing our collaborative relationship with the NSW Ministry of Health, and assisting where we can. PCNSW also made a pre-election submission and recommendations to highlight the importance of high quality Palliative Care, before the 2023 NSW state election. PCNSW has also continued to represent the interests of our members throughout the VAD implementation progress.

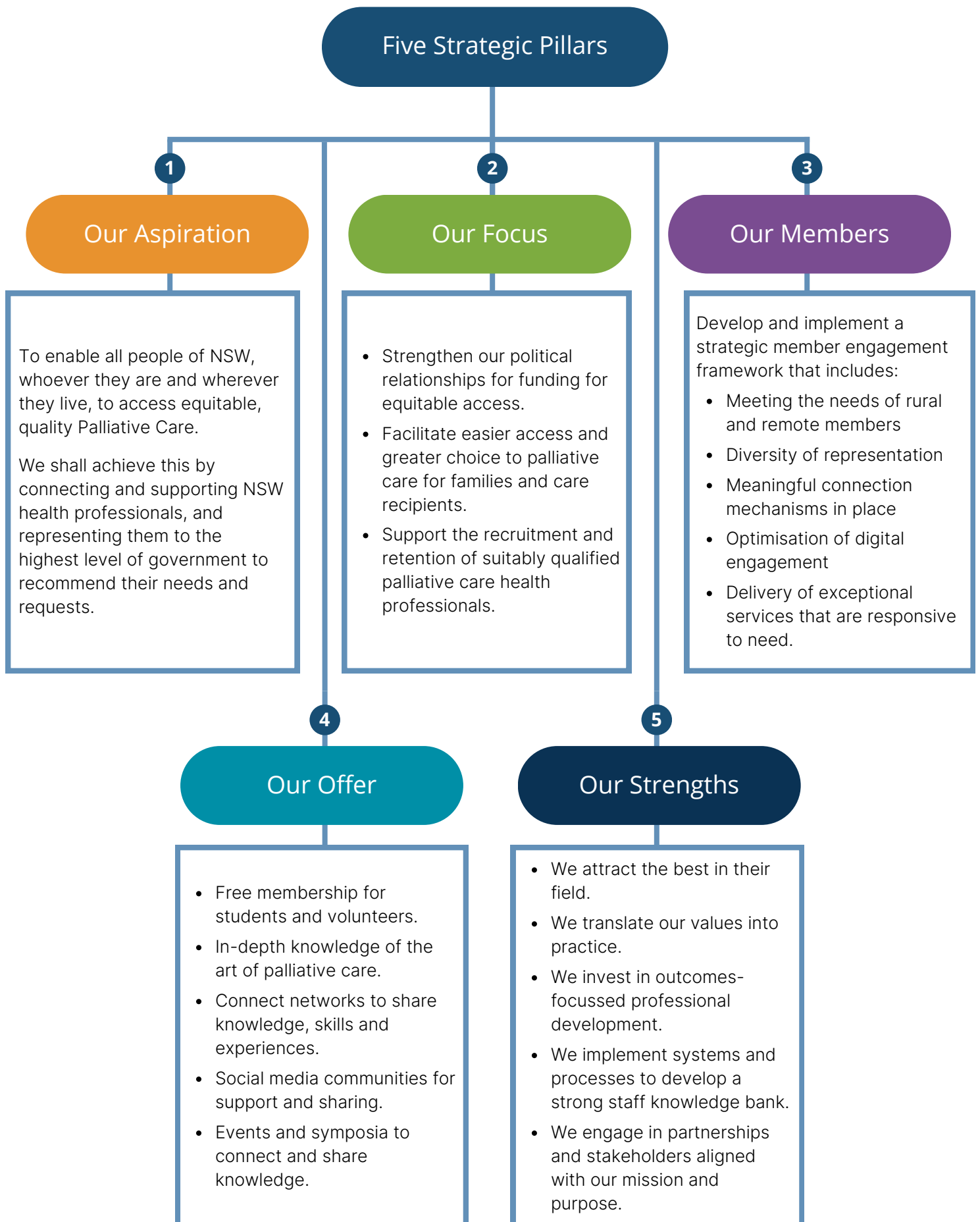


# Strategic Plan 2021 - 2024

PCNSW's 2021 - 2024 strategic plan outlines our goals as an organisation and guides the direction of our projects and outputs. Our five strategic pillars highlights the key focuses of our organisation, and serves as the foundation of the work we do to support Palliative Care in NSW. Our five strategic pillars can be viewed in depth on the following page.

Our strategic plan was developed through a combination of membership surveys, Management Committee consultation, stakeholder collaboration and community discussion. As a result of such extensive community and stakeholder consultation, we feel confident that our strategic plan accurately represents the interests and goals of PCNSW as a not-for-profit organisation. We are committed to achieving the goals outlined in our strategic plan, and we continue working to support our members and the wider Palliative Care community, as the peak body for Palliative Care in NSW. Our Strategic Plan is available to view in full on our website.





- Develop and implement a strategic member engagement framework that includes:
- Meeting the needs of rural and remote members
  - Diversity of representation
  - Meaningful connection mechanisms in place
  - Optimisation of digital engagement
  - Delivery of exceptional services that are responsive to need.

# Volunteer Support Services Programme

Although the impacts of COVID-19 continue to be felt, most volunteer services across NSW are back in operation and working to rebuild their capacity. We are pleased to hear that many services are recruiting new volunteers and preparing for referrals. We would like to thank the NSW Volunteer Managers and services for their continued hard work and dedication during these difficult times and look forward to working with you as your services recover.

PCNSW's Biennial State Conference in 2022 served as a great opportunity to highlight the importance of volunteers in Palliative Care services to the many health professionals who attended the event. We held a presentation on 'Bending Beats Breaking: How the challenge of COVID has invited a re-think of real community involvement in Palliative Care' at the conference, which received positive feedback from audience members.

National Volunteer Week was celebrated in May 2023, with the theme 'The Change Makers' highlighting the immense impact volunteers have on our communities and health systems. It was wonderful to see the ways services celebrated their volunteers during the week.

We continue to maintain an online presence via our website and other social media platforms disseminating information and promoting Palliative Care volunteering. Our Volunteer Hub website also hosts our suite of resources, our research, information, news, and events.

Early in this reporting period we engaged in research interviewing volunteer services and collecting data for the Snapshot 2022: A Review of Palliative Care Volunteering in NSW. The completed report is available to download from the VolunteerHub website.

The NSW Network of Managers of Palliative Care Volunteers continued to meet quarterly, and we celebrated the end of 2022 with a Christmas lunch. The regular meetings provide a great opportunity to reconnect and seek advice from other Managers in the Network. We are extremely proud to support the Volunteer Support Services Programme and the Managers of the Network, and we believe that the connections formed between services are incredibly beneficial for Palliative Care volunteering in NSW.



Nine new Volunteer Managers joined our Network from services located in Hunter New England, Northern NSW, Southern NSW, South Western Sydney, and Northern Sydney Local Health Districts. One of these services was the brand new Adolescent and Young Adult Hospice in Manly which opened in early 2023. New managers were linked with more experienced managers and supported with advice and resources.

Offering professional development is another way we support managers of volunteers. We held three forums online for Volunteer Managers: 'Bereavement' in March, 'Confidentiality, Boundaries, and Ethical Lines' and 'Debriefing Essentials' in June.

Volunteers are also offered professional development with the opportunity to attend four training sessions. We hosted "Cultural insights: Rights, rituals, beliefs, and practise at end of life" in Warilla in March, "The Cost of Caring" in Parkes in May,

and "Culturally Inclusive Care" in Darling Square in June. Our online event 'Engaging the creative imagination in caring for ourselves and others' was very well attended with over seventy registrants spread across eleven Local Health Districts.

We have also been busy preparing for the NSW Palliative Care Volunteer Conference, which will be held at the end of 2023. We are pleased to announce that the theme of the conference is 'The Power of Perspective' and will be held at the RSL ANZAC Village in Narrabeen, NSW. The conference serves to celebrate our volunteers and Network Managers and provide them with additional support and training. We would like to thank the RSL ANZAC Village for providing us with such a wonderful location for the event, and we look forward to seeing you all there.

**Kate Bowman**

Manager, Volunteer Support Services Programme



(L-R) Kate Bowman PCNSW with Volunteer Managers at the 2022 PCNSW Biennial State Conference - Fiona Sivyer, Michelle Gardiner and Lauren Hare from Southern NSW LHD, Arlene Roache from South Western Sydney LHD, Sandra Hiscock from Southern Highlands Community Hospice, Carolyn Wilkinson from Nepean/Hawkesbury service.

# Palliative Care Service Guide

The new position of the Palliative Care Service Guide commenced at the end of November 2022. The role has proven extremely successful at increasing our communications and engagement with our members and the wider community. A chart and graph have been provided on the following page, which depict the number of calls each month and the identity of the callers, between January - June 2023.

Over the six month period from January – June 2023, there was a total 165 telephone calls to the advisory service. Nearly two-thirds of calls (62%) were from a carer/family or friend, followed by health professionals (30%), volunteers (1%), aged care worker (1%) and other (7%).

The reasoning for calls from families and carers were identified as needing explanation of palliative care and a description of how services operate, details on how to refer to a specialist Palliative Care service, and details of specific contact details of services within the caller's geographical area. An additional 25% of calls from carer/family members asked about symptom management requiring linkage to specialist Palliative Care for review. Concerningly, nearly 13% of callers were concerned about not receiving Palliative Care input whilst in

a major hospital and on the verge of discharge. These callers were encouraged to request a consult. There were also calls about practical home help, family conflict, aged care packages no longer meeting the needs of the individual and financial assistance queries.

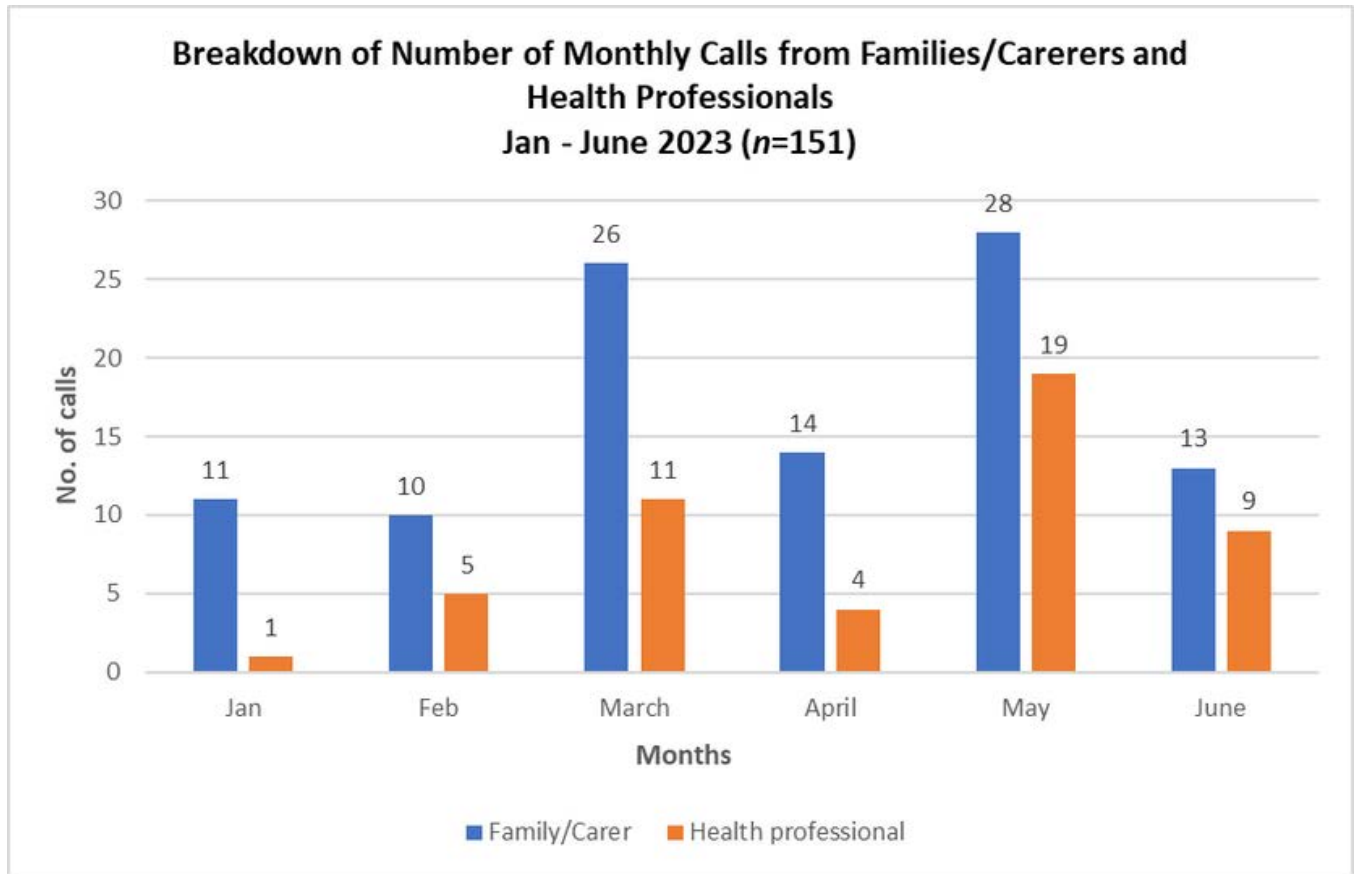
Of the total calls from health professionals/organisations (30%), the reasoning was varied. Some callers were asking about specific resources or education, jobs, volunteer opportunities, funding opportunities and national conference questions. There was a peak of calls from health professionals during May, related to yearly renewal of membership.

This report highlights that most callers originated from the public (62%). Explanations about what is Palliative Care, how to refer, linkage to specific geographical services and identification of symptom issues and the need for specialist Palliative Care advice were the most common reasons for calling from the public. While most health professionals were familiar with how to contact Palliative Care NSW, carers/family members searched the internet to find the organisation.

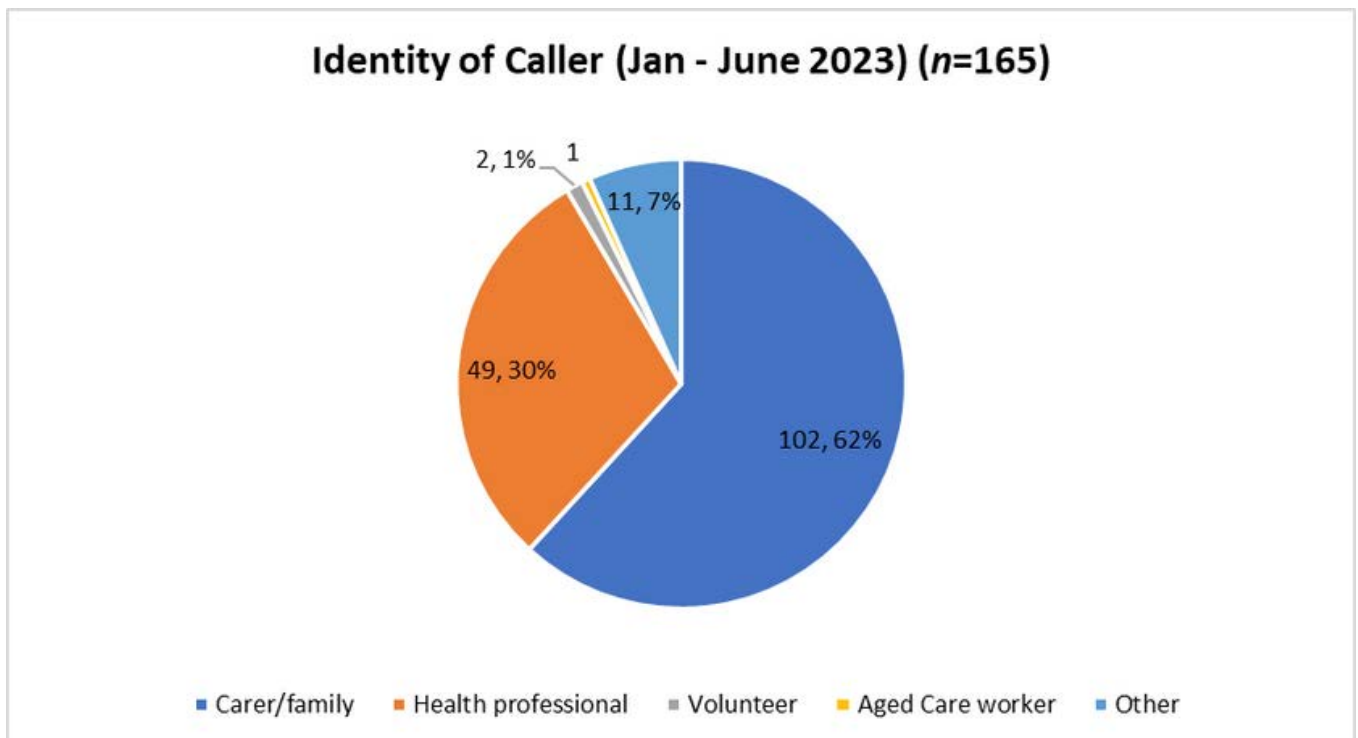
**Dr Peta McVey**

Palliative Care Service Guide

**Number of monthly calls to PCNSW from families/carers and health professionals between January - June 2023:**



**The identity of all calls to the PCNSW Palliative Care Service Guide between January - June 2023:**



# Highlights

## PCNSW Biennial State Conference 2022

PCNSW's long-awaited 2022 Biennial State Conference was held in-person for the first time since COVID-19. We were fortunate to partner with our Central Coast colleagues to host the conference at the Crowne Plaza in Terrigal. We have provided some highlights from the conference on the following pages.

The theme was *Facing the Future Together*, highlighting the solidarity formed amongst the Palliative Care community while facing unrelenting challenges. We were delighted to welcome our international guest keynote presenter Professor Robert Arnold, MD, from the University of Pittsburgh. We would like to thank Professor Arnold for his inspiring presentation on *Communicating with Families in a (Post) Covid Time* and workshop on *Facing the Future Together: Communications Deep Dive*. It was an honour to hear from such an esteemed member who has contributed greatly to the sector of Palliative Care.

We would also like to thank our other fantastic speakers: Professor Nick Goodwin, Dr Gareth Watts, Professor Deb Parker, A/Professor Nicole Sutton, Juliane Samara, Dr Joanne Doran,



Dr Rachel Coghlan, Joan Ryan OAM, Adj. Associate Professor Violet Platt, Dr Claudia Viridun, Dr Tim Luckett, Dr Frank Brennan AM, Melissa Cumming and Carrie Zhang. It was fantastic to hear from such prominent figures in the Palliative Care community, and the presentations were deeply enjoyed by our attendees.

We had a tremendous amount of abstract and poster submissions from not only our members, but also members of the wider health and social communities. We would like to thank everyone who took the time to create and submit abstracts and posters. It is with your help that our conference was such a success, and we were incredibly grateful to hear from so many current researchers and health professionals.

Our conference dinner was once again a huge success, and it was terrific to see everyone dancing and enjoying themselves on the night. The dinner serves as a wonderful way to be able to celebrate our dedicated Palliative Care professionals, and provides everyone with some time to relax.

We would like to thank everyone who attended the 2022 Biennial State Conference. We are already planning our next conference for 2024, and we look forward to seeing you all there!



Welcome from former PCNSW Chief Executive Officer Linda Hansen.



Welcome from Adam Crouch, MP.



Performance by The Glen Dance Group.



Registration table hosted by PCNSW staff.

**Some of our fantastic presenters:**



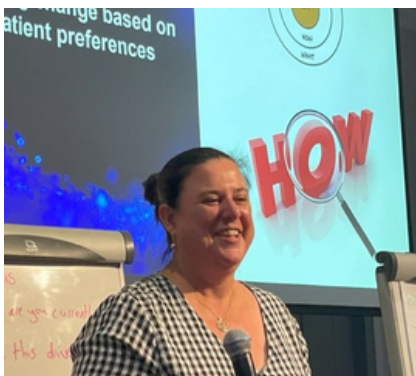
Keynote Presenter Professor Robert Arnold, MD



Nurse Practitioner Juliane Samara



Professor Nick Godwin



Dr Claudia Virdun



Dr Joanne Doran



Dr Gareth Watts



Moments from our conference:



## National Palliative Care Week 2023

We also celebrated National Palliative Care Week (NPCW) with our members and the wider healthcare community toward the end of May 2023. NPCW serves as a wonderful opportunity to raise awareness on the importance of quality Palliative Care, and highlights the incredible work performed by our dedicated healthcare professionals.

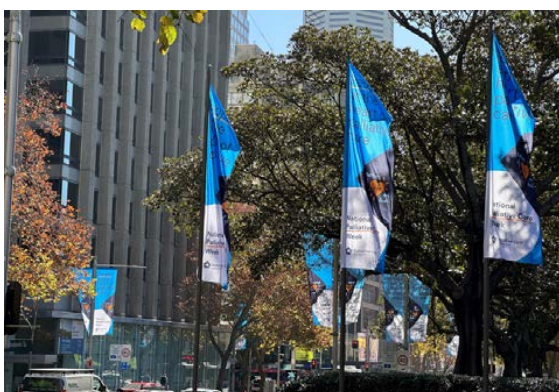
This year's theme for NPCW was *Matters of Life and Death* and highlighted the *People at the Heart of Palliative Care*. PCNSW was proud to present street banners celebrating NPCW which were displayed in the Sydney CBD for two weeks. The street banners successfully raised awareness for NPCW and promoted PCNSW as an organisation in the heart of Sydney.

Former Chief Executive Officer Linda Hansen and President Felicity Burns attended the national launch of NPCW in Canberra, which was hosted by Palliative Care Australia. To launch NCPW in NSW, PCNSW held a screening of *Live the Life You Please* at the Palace Cinema in Sydney. The launch provided a fantastic opportunity to reconnect with our members and celebrate the *People at the Heart of Palliative Care*.



PCNSW's banners on display in the Sydney CBD during NPCW 2023.

PCNSW's Professional Education Day was held at The Waterfront Function Centre in Sans Souci to conclude NPCW 2023. We were delighted to welcome our members to the event, where they were able to engage with different topics of interest and hear from our brilliant presenters. Dr Linda Sheahan discussed the upcoming Voluntary Assisted Dying legislation in NSW, and Dr Toni Lindsay explored the topic of *Managing the Impacts of Burnout, Compassion Fatigue and Humanness in the Face of Tough Things*. Mary Ashton held a relaxing meditation session where attendees were able to reflect on the contributions they make to the Palliative Care community through their work. Sandra Sullivan presented on the topic of *Clinical Supervision: The Benefits and the Barriers for Nurses Working in Palliative Care*, and Irene Calaizis concluded the day by hosting a collaborative Art Therapy session.



PCNSW's banners on display in the Sydney CBD during NPCW 2023.



PCNSW's Professional Education Day 2023 attendees with their collaborative artworks.

Our Professional Education Day serves as a fantastic way to reconnect with our members, promote PCNSW as an organisation and provide education on current topics of interest amongst the Palliative Care community. We were pleased to receive significant positive feedback from attendees who enjoyed the day, and will use the feedback provided in preparation for upcoming events. We would like to thank our members for attending our 2023 Professional Education Day, and we look forward to seeing you all at the next!



*Collaborative Art Therapy session at PCNSW's Professional Education Day 2023.*



*Dr Toni Lindsay presenting at PCNSW's Professional Education Day 2023.*

### **Homelessness and Palliative Care**

In 2022, PCNSW completed a scoping study on Homelessness and Palliative Care in Metropolitan Sydney, as part of Palliative Care Australia's National Project. Due to significant interest in this study from health and social services, PCNSW is completing a subsequent study on Homelessness and Palliative Care in Regional, Rural and Remote areas of NSW. The study aims to explore the availability and accessibility of Palliative Care for patients facing homelessness in these regions, and is expected to be completed later in 2023. The completed Metropolitan study is available to view on our website.

### **Community Conversations Project**

PCNSW introduced the Community Conversations Project in 2023. The project aims to increase community awareness of available Palliative Care supports and services, and all members of the community are welcome to attend these sessions. PCNSW's goal for this project is to open new opportunities for ongoing sustainable cultural change in how people engage with end-of-life matters. By improving community awareness of services, systems, resources and simultaneously demystifying death and dying, we hope to improve Palliative Care outcomes in these communities. Liz Rhodes has hosted a number of sessions with communities in Regional Southern NSW so far. We have received a significant amount of positive feedback from the attendees of the sessions, and believe there is potential for the project to expand to other regions of NSW in the future.

# Engagement



**35,448**

people reached through Facebook page  
(an increase of **20,719** since last financial year)



**40,317**

Website users  
(an increase of **17,344** users since last financial year)

**3,526**

Facebook followers  
(an increase of **280** followers since last financial year)



**53%**

average member eNews open rate



**2,068**

people reached through Instagram  
(an increase of **1,319** since last financial year)



**11,896**

Tweet impressions made this financial year

**1,251**

Instagram followers  
(an increase of **118** followers since last financial year)

**2,303**

Twitter followers



**308**

PCNSW members  
(an increase of **119** members since last financial year)

# Our People

## PCNSW Staff

### **Linda Hansen**

Chief Executive Officer (2004 - 2023)

### **Megan Asbury**

Deputy Chief Executive Officer  
Acting Chief Executive Officer (2023)

### **Kate Bowman**

Manager, Volunteer Support Services  
Programme

### **Maria Lopez**

Communications Officer

### **Dr Peta McVey**

Palliative Care Service Guide

### **Emma Scott-Stevenson**

Policy Officer

## Management Committee

### **Felicity Burns**

President

### **Therese Smeal**

Vice President

### **Joan Ryan OAM**

Secretary

### **Nicole Sutton**

Treasurer

### **Deb Parker**

### **Scott Read**

### **Sandra Sullivan**

### **Carmen Sanchez**

### **Janelle Sanderson**

### **Colleen Carter**

# Financial Report

## Not-For-Profit - Association Report

PALLIATIVE CARE ASSOCIATION OF NEW SOUTH WALES  
INCORPORATED

ABN 67 231 950 900

For the year ended 30 June 2023

Prepared by Robertson & Greenwood Pty Ltd

## Contents

- 3** Income and Expenditure Statement
- 5** Assets and Liabilities Statement
- 6** Notes to the Financial Statements
- 9** Auditor's Report
- 10** Certificate By Members of the Committee
- 11** AUDITOR'S INDEPENDENCE DECLARATION

## Income and Expenditure Statement

### PALLIATIVE CARE ASSOCIATION OF NEW SOUTH WALES INCORPORATED

For the year ended 30 June 2023

	2023	2022
<b>Income</b>		
Donations	952,713	580,865
<b>Total Income</b>	<b>952,713</b>	<b>580,865</b>
<b>Gross Surplus</b>	<b>952,713</b>	<b>580,865</b>
<b>Expenditure</b>		
Accounting Fees	8,676	5,828
Airfares	8,650	3,213
Audit Fees	3,000	3,000
Bank Charges	2,223	1,240
Computing Expenses	19,543	28,185
Conference Expenses	13,344	3,085
Consultancy fees	7,351	-
Contract Labour	20,281	6,438
Courier fees/Freight	50	122
Depreciation Expense	3,212	2,911
Education Expenses	2,135	12,933
Education Program	135	33
Employee Novated Lease Expenses	10,170	7,660
Employee Provisions	(17,818)	9,825
Events/facility hire/catering	107,313	5,411
Ground Transport	4,772	884
Insurance	4,830	4,819
Interest Expense	1	5
Management Committee Expenses	3,672	3,901
Meals & Accomodation	9,057	2,797
Membership/Subscriptions	3,855	1,812
NPCW Expenses	27,114	6,086
Pallium - Design	2,438	4,470
PCA Conference	129	-
Postage	239	628
Printing	7,153	5,694
Rent	57,782	57,256
Repairs & Maintenance	3,438	1,713
Staff Amenities	43	2,970
Stationery & Office Exp	6,904	4,327
Sundry Items	20,000	16,364
Superannuation Expense	47,594	38,917
Teleconferences	382	483
Telephone	7,721	7,186
Wages & Salaries	489,742	394,932

The accompanying notes form part of these financial statements. These statements should be read in conjunction with the attached compilation report.



Income and Expenditure Statement

	2023	2022
Workers Compensation	2,185	530
<b>Total Expenditure</b>	<b>887,318</b>	<b>645,656</b>
<b>Current Year Surplus/ (Deficit) Before Income Tax Adjustments</b>	<b>65,395</b>	<b>(64,791)</b>
<b>Current Year Surplus/(Deficit) Before Income Tax</b>	<b>65,395</b>	<b>(64,791)</b>
<b>Net Current Year Surplus After Income Tax</b>	<b>65,395</b>	<b>(64,791)</b>

The accompanying notes form part of these financial statements. These statements should be read in conjunction with the attached compilation report.

## Assets and Liabilities Statement

### PALLIATIVE CARE ASSOCIATION OF NEW SOUTH WALES INCORPORATED As at 30 June 2023

	NOTES	30 JUN 2023	30 JUN 2022
<b>Assets</b>			
<b>Current Assets</b>			
Cash and Cash Equivalents		774,836	687,125
Trade and Other Receivables	3	5,885	20,000
Other Current Assets		7,982	2,300
<b>Total Current Assets</b>		<b>788,704</b>	<b>709,425</b>
<b>Non-Current Assets</b>			
Plant and Equipment and Vehicles	4	11,188	11,736
Other Non-Current Assets		99,912	100,668
<b>Total Non-Current Assets</b>		<b>111,100</b>	<b>112,404</b>
<b>Total Assets</b>		<b>899,804</b>	<b>821,829</b>
<b>Liabilities</b>			
<b>Current Liabilities</b>			
Trade and Other Payables	5	74,132	41,590
Provisions	6	54,711	79,199
<b>Total Current Liabilities</b>		<b>128,842</b>	<b>120,789</b>
<b>Non-Current Liabilities</b>			
<b>Other Non-Current Liabilities</b>			
Accrued Income		42,372	44,517
Lease Liability - Current		60,044	60,044
Lease Liability - Non Current		10,546	10,546
Long Service Leave (N/C) Provision		24,937	18,266
<b>Total Other Non-Current Liabilities</b>		<b>137,899</b>	<b>133,374</b>
<b>Total Non-Current Liabilities</b>		<b>137,899</b>	<b>133,374</b>
<b>Total Liabilities</b>		<b>266,742</b>	<b>254,162</b>
<b>Net Assets</b>		<b>633,062</b>	<b>567,667</b>
<b>Member's Funds</b>			
Capital Reserve		565,200	499,805
Financial Instruments		67,862	67,862
<b>Total Member's Funds</b>		<b>633,062</b>	<b>567,667</b>

The accompanying notes form part of these financial statements. These statements should be read in conjunction with the attached compilation report.

# Notes to the Financial Statements

## PALLIATIVE CARE ASSOCIATION OF NEW SOUTH WALES INCORPORATED For the year ended 30 June 2023

### 1. Summary of Significant Accounting Policies

The financial statements are special purpose financial statements prepared in order to satisfy the financial reporting requirements of Palliative Care Association of NSW Incorporated as an individual entity. This entity is a Not for Profit Association.

The financial statements have been prepared on an accruals basis and are based on historic costs.

The following significant accounting policies, which are consistent with the previous period unless stated otherwise, have been adopted in the preparation of these financial statements.

#### Property, Plant and Equipment (PPE)

Leasehold improvements and office equipment are carried at cost less, where applicable, any accumulated depreciation.

The depreciable amount of all PPE is depreciated over the useful lives of the assets to the association commencing from the time the asset is held ready for use.

Leasehold improvements are amortised over the shorter of either the unexpired period of the lease or the estimated useful lives of the improvements.

#### Impairment of Assets

At the end of each reporting period, the committee reviews the carrying amounts of its tangible and intangible assets to determine whether there is any indication that those assets have been impaired. If such an indication exists, an impairment test is carried out on the asset by comparing the recoverable amount of the asset, being the higher of the asset's fair value less costs to sell and value in use, to the asset's carrying amount. Any excess of the asset's carrying amount over its recoverable amount is recognised in the income and expenditure statement.

#### Employee Provisions

Provision is made for the association's liability for employee benefits arising from services rendered by employees to the end of the reporting period. Employee provisions have been measured at the amounts expected to be paid when the liability is settled.

#### Cash on Hand

Cash on hand includes cash on hand, deposits held at call with banks, and other short-term highly liquid investments with original maturities of three months or less.

#### Accounts Receivable and Other Debtors

Accounts receivable and other debtors include amounts due from members as well as amounts receivable from donors. Receivables expected to be collected within 12 months of the end of the reporting period are classified as current assets. All other receivables are classified as non-current assets.

#### Revenue and Other Income

---

These notes should be read in conjunction with the attached compilation report.

#### Notes to the Financial Statements

Revenue is measured at the fair value of the consideration received or receivable after taking into account any trade discounts and volume rebates allowed. For this purpose, deferred consideration is not discounted to present values when recognising revenue.

Interest revenue is recognised using the effective interest method, which for floating rate financial assets is the rate inherent in the instrument. Dividend revenue is recognised when the right to receive a dividend has been established.

Grant and donation income is recognised when the entity obtains control over the funds, which is generally at the time of receipt.

If conditions are attached to the grant that must be satisfied before the association is eligible to receive the contribution, recognition of the grant as revenue will be deferred until those conditions are satisfied.

All revenue is stated net of the amount of goods and services tax.

#### Leases

Leases of PPE, where substantially all the risks and benefits incidental to the ownership of the asset (but not the legal ownership) are transferred to the association, are classified as finance leases.

Finance leases are capitalised by recording an asset and a liability at the lower of the amounts equal to the fair value of the leased property or the present value of the minimum lease payments, including any guaranteed residual values. Lease payments are allocated between the reduction of the lease liability and the lease interest expense for that period.

Leased assets are depreciated on a straight-line basis over the shorter of their estimated useful lives or the lease term. Lease payments for operating leases, where substantially all the risks and benefits remain with the lessor, are charged as expenses in the periods in which they are incurred.

#### Goods and Services Tax (GST)

Revenues, expenses and assets are recognised net of the amount of GST, except where the amount of GST incurred is not recoverable from the Australian Taxation Office (ATO). Receivables and payables are stated inclusive of the amount of GST receivable or payable. The net amount of GST recoverable from, or payable to, the ATO is included with other receivables or payables in the assets and liabilities statement.

#### Financial Assets

Investments in financial assets are initially recognised at cost, which includes transaction costs, and are subsequently measured at fair value, which is equivalent to their market bid price at the end of the reporting period. Movements in fair value are recognised through an equity reserve.

#### Accounts Payable and Other Payables

Accounts payable and other payables represent the liability outstanding at the end of the reporting period for goods and services received by the association during the reporting period that remain unpaid. The balance is recognised as a current liability with the amounts normally paid within 30 days of recognition of the liability.

These notes should be read in conjunction with the attached compilation report.

## Notes to the Financial Statements

	2023	2022
<b>2. Cash on Hand</b>		
Bendigo Bank	406,928	325,823
Bendigo Bank Term Deposit	316,961	316,127
Gift Account	50,947	45,175
<b>Total Cash on Hand</b>	<b>774,836</b>	<b>687,125</b>
	2023	2022
<b>3. Trade and Other Receivables</b>		
<b>Other Receivables</b>		
Trade Debtors	5,885	20,000
<b>Total Other Receivables</b>	<b>5,885</b>	<b>20,000</b>
<b>Total Trade and Other Receivables</b>	<b>5,885</b>	<b>20,000</b>
	2023	2022
<b>4. Plant and Equipment, Motor Vehicles</b>		
<b>Plant and Equipment</b>		
Fixed Assets	11,188	11,736
<b>Total Plant and Equipment</b>	<b>11,188</b>	<b>11,736</b>
<b>Total Plant and Equipment, Motor Vehicles</b>	<b>11,188</b>	<b>11,736</b>
	2023	2022
<b>5. Trade and Other Payables</b>		
<b>Other Payables</b>		
Accrued Expenses	25,031	15,439
CC Kate Bowman	-	1,239
CC Linda Hansen	226	1,850
CC Megan Burke	-	94
GST	6,447	(1,761)
PAYG Tax	37,800	20,752
Trade Creditors	4,629	3,976
<b>Total Other Payables</b>	<b>74,132</b>	<b>41,590</b>
<b>Total Trade and Other Payables</b>	<b>74,132</b>	<b>41,590</b>
	2023	2022
<b>6. Provisions</b>		
Annual Leave (Current) Provision	41,566	32,888
Long Service Leave (Current) Provision	13,144	46,311
<b>Total Provisions</b>	<b>54,711</b>	<b>79,199</b>

These notes should be read in conjunction with the attached compilation report.

## Auditor's Report

### PALLIATIVE CARE ASSOCIATION OF NEW SOUTH WALES INCORPORATED For the year ended 30 June 2023

#### Independent Auditors Report to the members of the Association

We have audited the accompanying financial report, being a special purpose financial report, of PALLIATIVE CARE ASSOCIATION OF NEW SOUTH WALES INCORPORATED (the association), which comprises the committee's report, the assets and liabilities statement as at 30 June 2023, the income and expenditure statement for the year then ended, notes comprising a summary of significant accounting policies and other explanatory information, and the certification by members of the committee on the annual statements giving a true and fair view of the financial position and performance of the association.

#### Committee's Responsibility for the Financial Report

The committee of PALLIATIVE CARE ASSOCIATION OF NEW SOUTH WALES INCORPORATED is responsible for the preparation and fair presentation of the financial report, and has determined that the basis of preparation described in Note 1 is appropriate to meet the requirements of the Australian Accounting Standards and is appropriate to meet the needs of the members. The committee's responsibility also includes such internal control as the committee determines is necessary to enable the preparation and fair presentation of a financial report that is free from material misstatement, whether due to fraud or error.

#### Auditor's Responsibility

Our responsibility is to express an opinion on the financial report based on our audit. We have conducted our audit in accordance with Australian Auditing Standards. Those standards require that we comply with relevant ethical requirements relating to audit engagements and plan and perform the audit to obtain reasonable assurance whether the financial report is free from material misstatement.

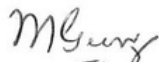
An audit involves performing procedures to obtain audit evidence about the amounts and disclosures in the financial report. The procedures selected depend on the auditor's judgment, including the assessment of the risks of material misstatement of the financial report, whether due to fraud or error. In making those risk assessments, the auditor considers internal control relevant to the association's preparation and fair presentation of the financial report, in order to design audit procedures that are appropriate in the circumstances, but not for the purpose of expressing an opinion on the effectiveness of the association's internal control. An audit also includes evaluating the appropriateness of accounting policies used and the reasonableness of accounting estimates made by the committee, as well as evaluating the overall presentation of the financial report.

We believe that the audit evidence we have obtained is sufficient and appropriate to provide a basis for our audit opinion.

#### Opinion

In our opinion, the financial report presents fairly, in all material respects, the financial position of PALLIATIVE CARE ASSOCIATION OF NEW SOUTH WALES INCORPORATED as at 30 June 2023 and (of) its financial performance for the year then ended in accordance with the accounting policies described in Note 1 to the financial statements.

Auditor's signature:



Auditor's address: Robertson & Greenwood

211/12 Century Circuit, Norwest 2153

Dated: 12/10/2023





**Palliative Care**  
NEW SOUTH WALES

**Palliative Care NSW**

Suite 706, 50 Clarence St, Sydney 2000  
(02) 8076 5600 | [palliativecarensw.org.au](http://palliativecarensw.org.au)